

Leading the Change to Open Science in European Universities

Dr Paul Ayris

Pro-Vice-Provost

UCL (University College London)

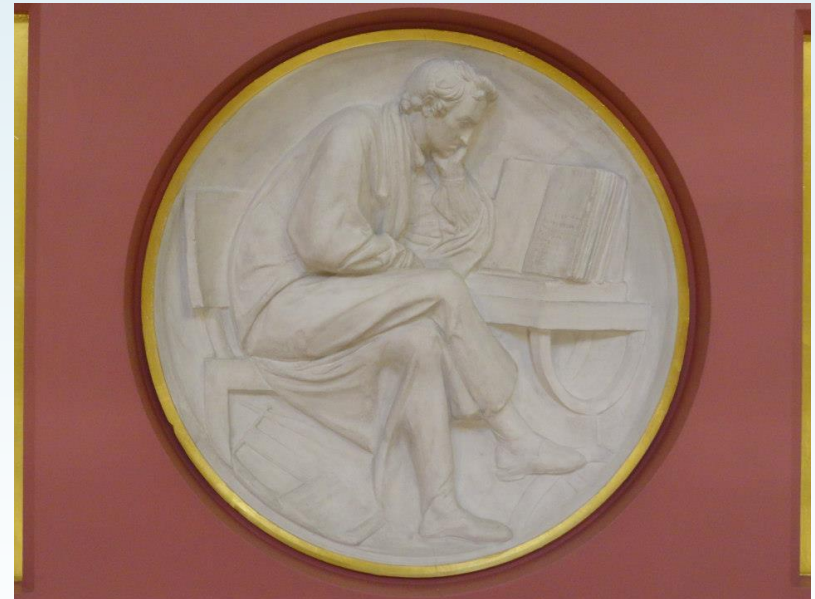
E-mail: p.ayris@ucl.ac.uk

Twitter: @ucylpay



Content

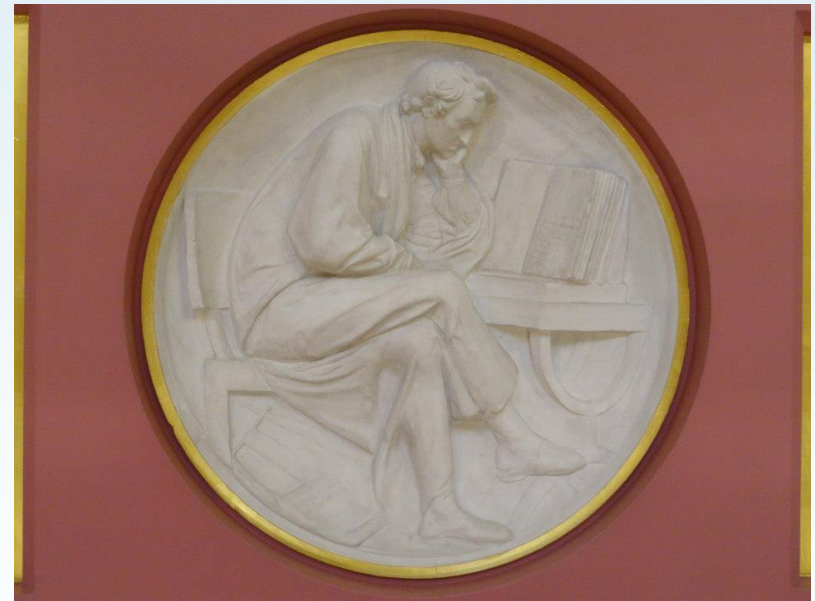
- ❑ LERU Roadmap
- ❑ Future publishing models
 - ❑ UCL Press 'white label' publishing service
- ❑ Research Data
- ❑ Rewards and Evaluation
- ❑ LERU Leadership Statement
- ❑ Building the Open Science community
- ❑ Conclusion



Plaster Relief by John Flaxman,
Flaxman Gallery, UCL

Content

- ❑ LERU Roadmap
- ❑ Future publishing models
 - ❑ UCL Press 'white label' publishing service
- ❑ Research Data
- ❑ Rewards and Evaluation
- ❑ LERU Leadership Statement
- ❑ Building the Open Science community
- ❑ Conclusion



Plaster Relief by John Flaxman,
Flaxman Gallery, UCL

European Commission: Open Science Policy Platform – 8 pillars of Open Science

Future of Scholarly Communication

EOSC (European Open Science Cloud)

FAIR Data

Skills

Research Integrity

Rewards

Altmetrics

Citizen Science

League of European Research Universities

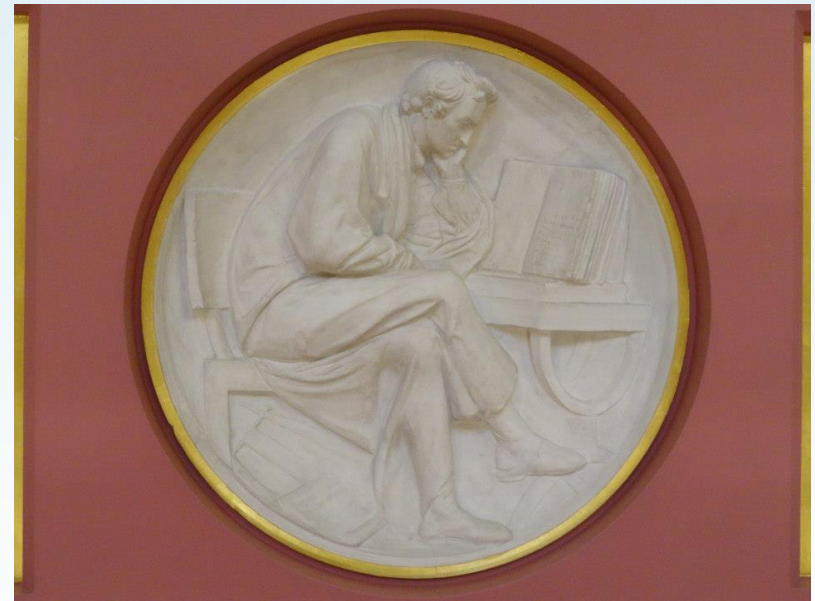
23 leading universities pushing the frontiers of innovative
research

- ❑ LERU has produced an Open Science Roadmap for universities
- ❑ Launched on 12 June 2018 at <https://www.leru.org/publications/open-science-and-its-role-in-universities-a-roadmap-for-cultural-change>
- ❑ 41 Recommendations



Content

- ❑ LERU Roadmap
- ❑ Future publishing models
 - ❑ UCL Press 'white label' publishing service
- ❑ Research Data
- ❑ Rewards and Evaluation
- ❑ LERU Leadership Statement
- ❑ Building the Open Science community
- ❑ Conclusion



Plaster Relief by John Flaxman,
Flaxman Gallery, UCL



- ❑ Plan S [Implementation Plan](#) with [Rationale](#) for changes
- ❑ [Statement from LERU](#) (League of European Research Universities) on the implications of the revised Implementation Plan

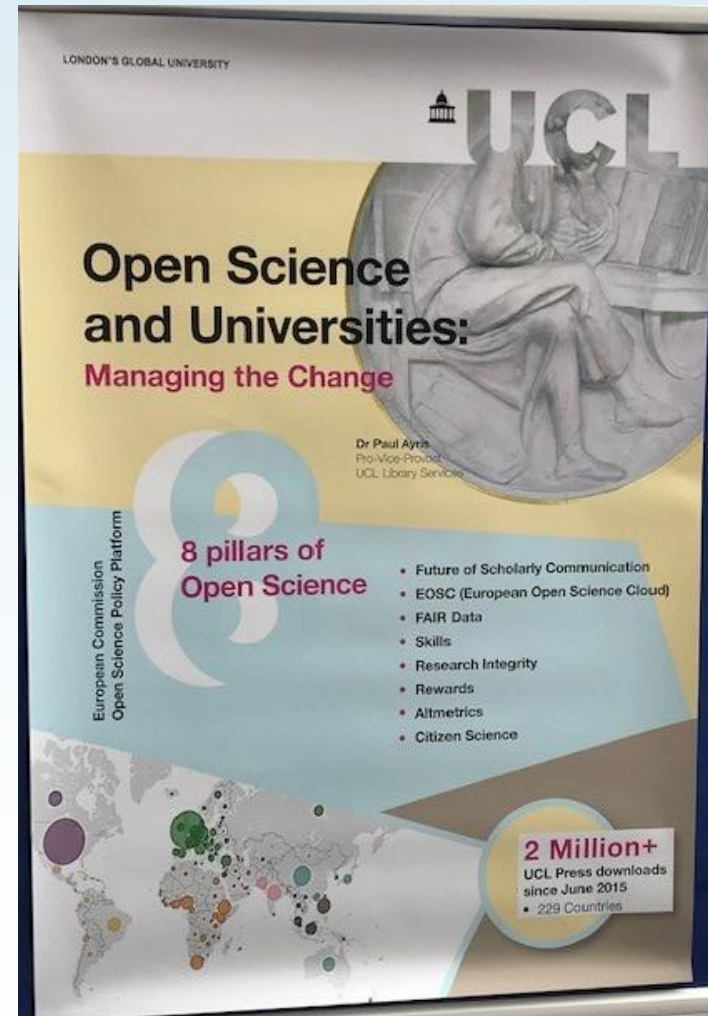
Actions that libraries should take

- ❑ Ensure all academics are aware of OA compliance requirements from their funders
- ❑ Look at Plan S Workshop from OAI11 in Geneva – results emerging. Linked at <https://zenodo.org/record/3251666#.XQ5pFpNKinA>



Actions that libraries should take

- ❑ Look at establishing Alternative Publishing Platforms which are Plan S-compliant
- ❑ Monitor their Green OA repositories, to ensure they meet revised Plan S requirements

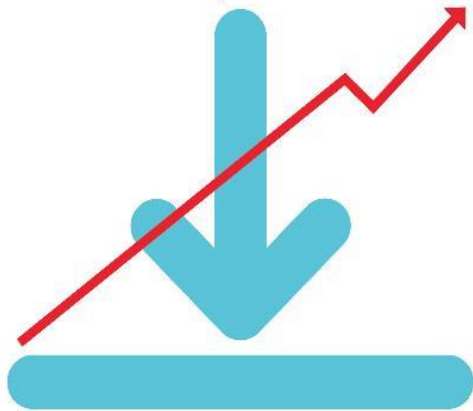


Alternative Publishing Platforms

 **UCL**
PRESS

2 million

downloads
since June 2015

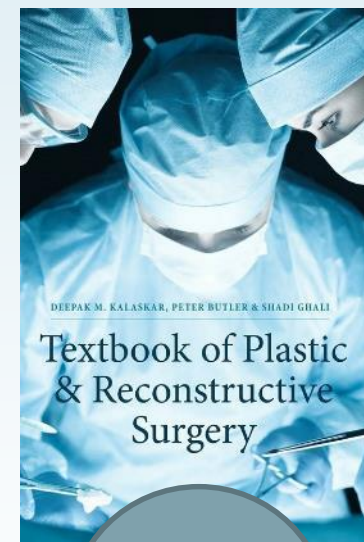
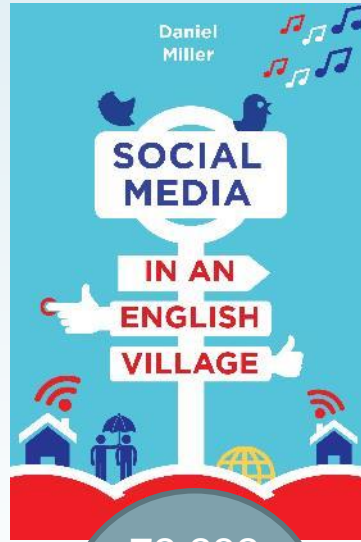
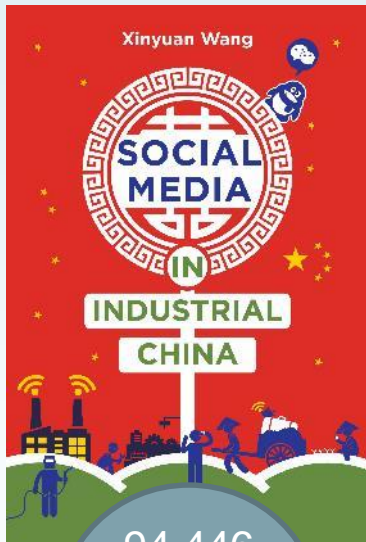
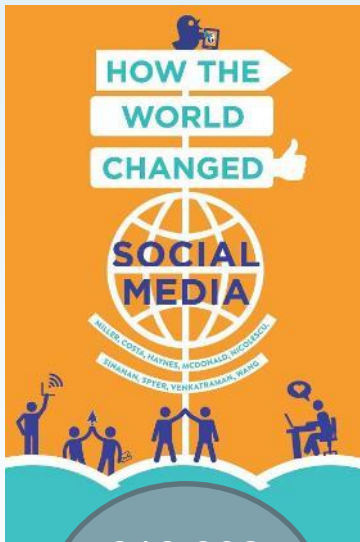


231
countries



**UCL Press downloads
since June 2015**

Most-downloaded books (Apr19)



319,902
Since
March
2016

94,446
Since
Sept
2016

72,232
Since
March
2016

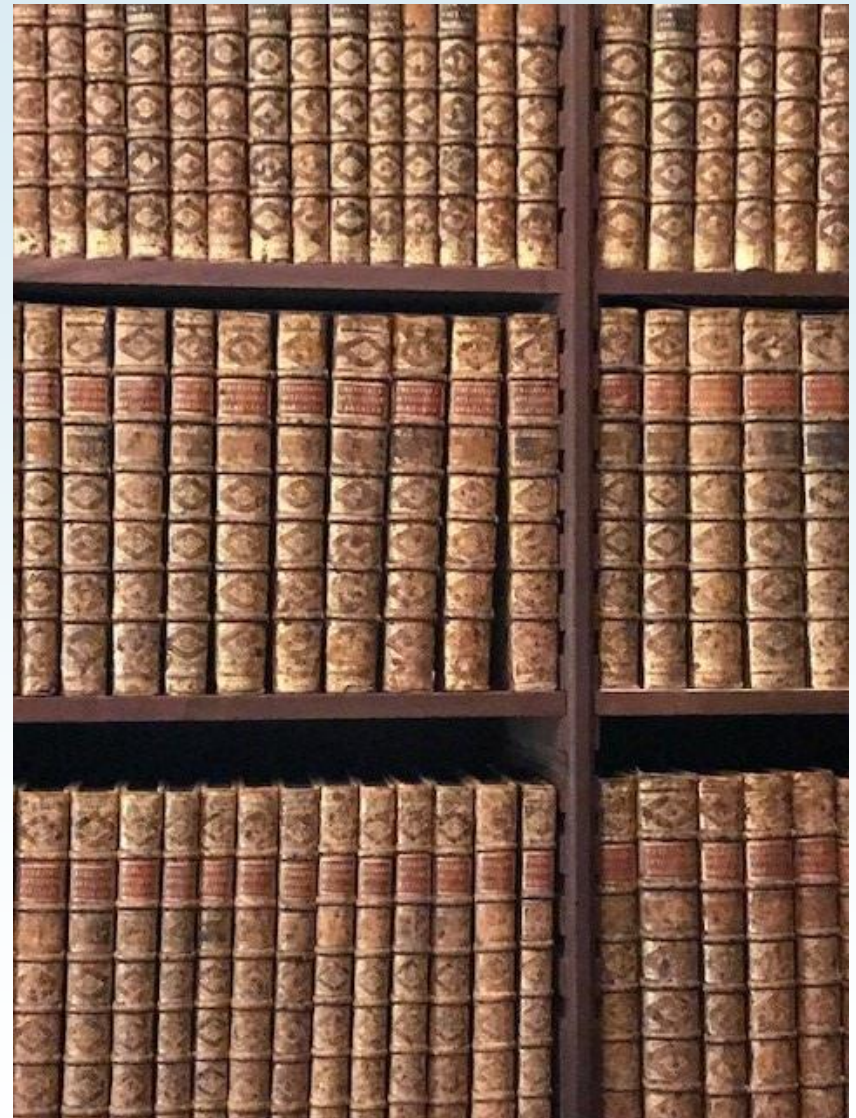
67,125
Since
January
2018

60,358
Since
August
2016

UCL Press offers publishing services

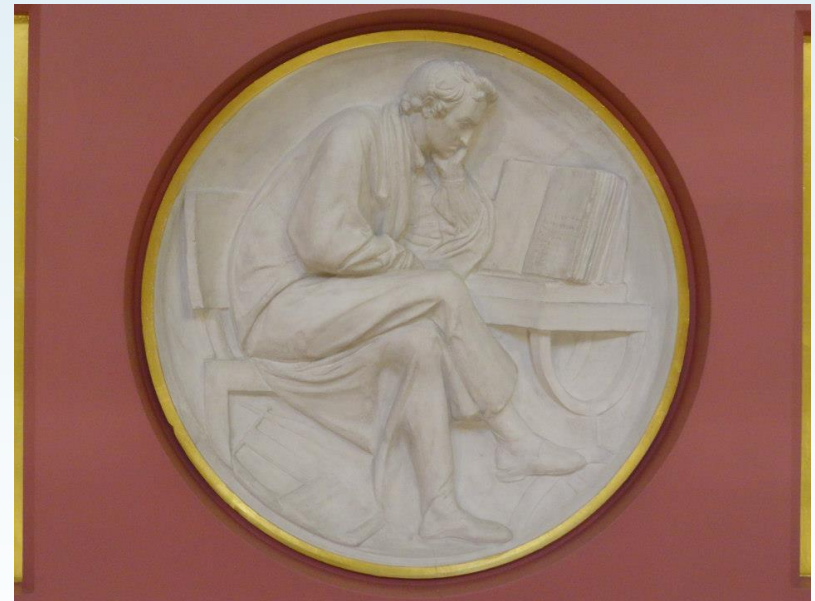


- Dublin City University is the first university to buy publishing services from UCL
- All outputs to be branded as Dublin City University Press
- All enquiries welcomed
- <https://www.uclpress.co.uk/>



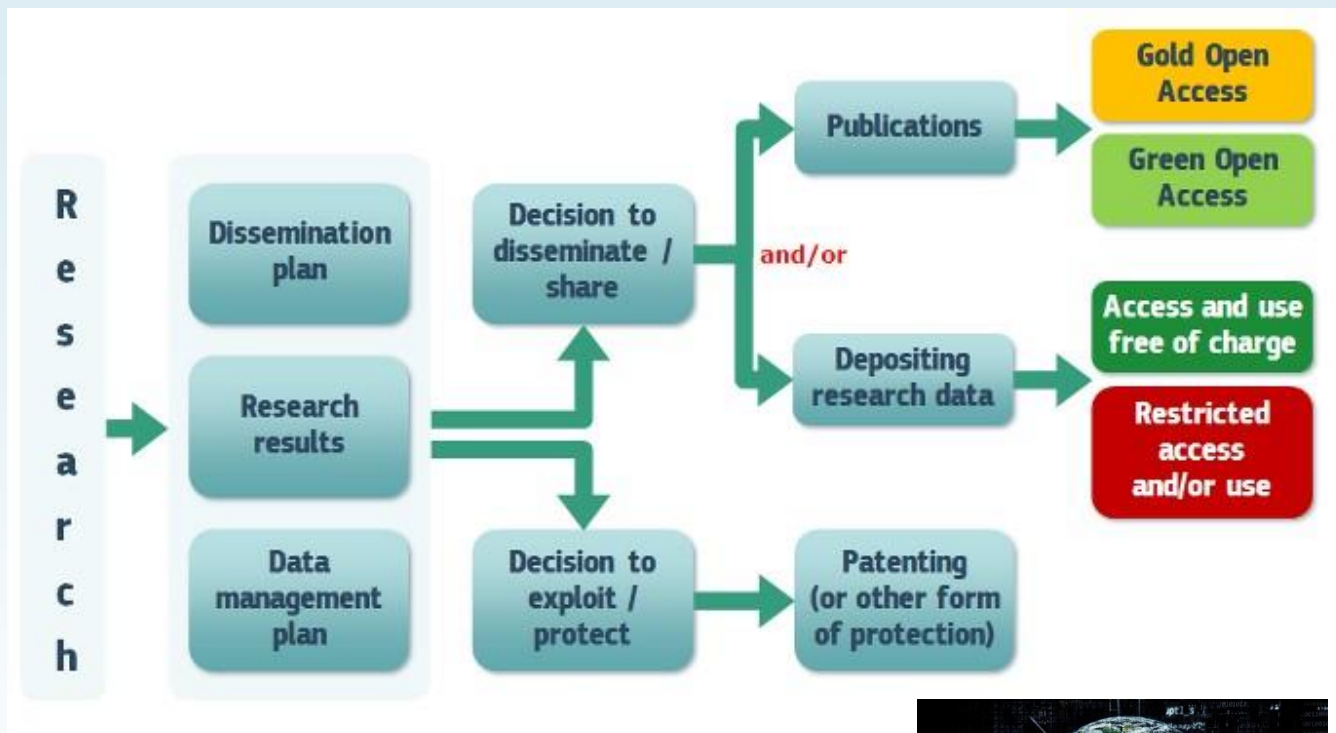
Content

- LERU Roadmap
- Future publishing models
 - UCL Press 'white label' publishing service
- Research Data**
- Rewards and Evaluation
- LERU Leadership Statement
- Building the Open Science community
- Conclusion



Plaster Relief by John Flaxman,
Flaxman Gallery, UCL

Research Data – a new currency



□ UCL RDR (Research Data repository)

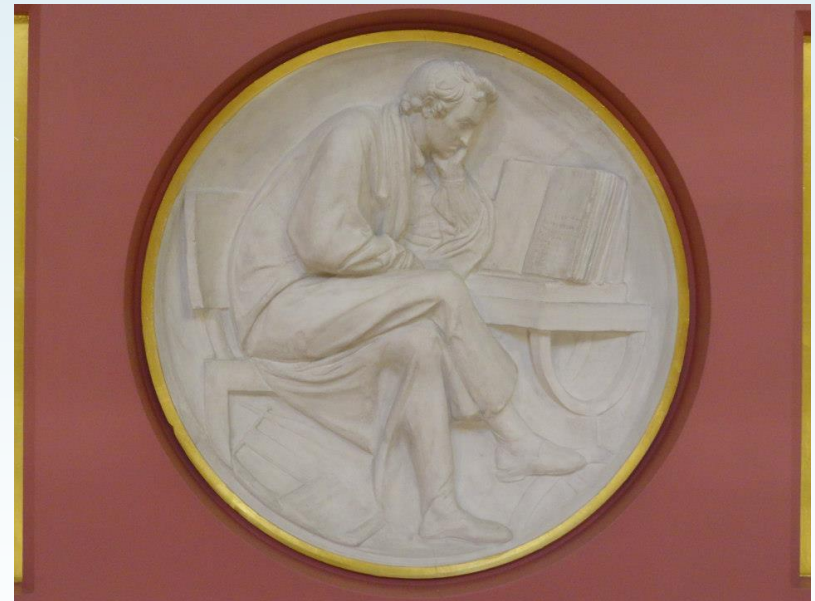


Graphic from: H2020 Online Manual

http://ec.europa.eu/research/participants/docs/h2020-funding-guide/cross-cutting-issues/open-access-data-management/open-access_en.htm

Content

- LERU Roadmap
- Future publishing models
 - UCL Press 'white label' publishing service
- Research Data
- Rewards and Evaluation
- LERU Leadership Statement
- Building the Open Science community
- Conclusion



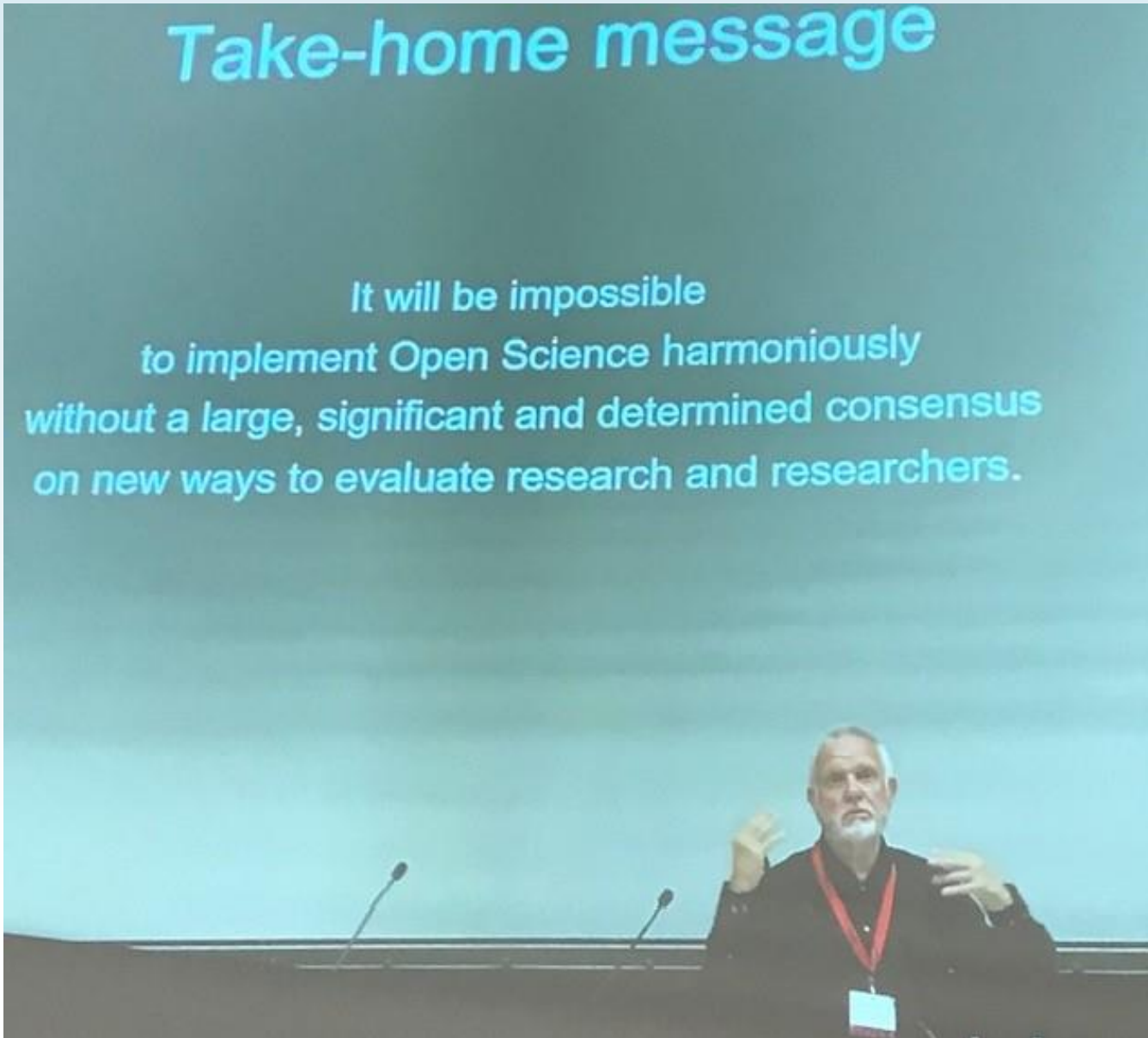
Plaster Relief by John Flaxman,
Flaxman Gallery, UCL

Take-home message

*It will be impossible
to implement Open Science harmoniously
without a large, significant and determined consensus
on new ways to evaluate research and researchers.*

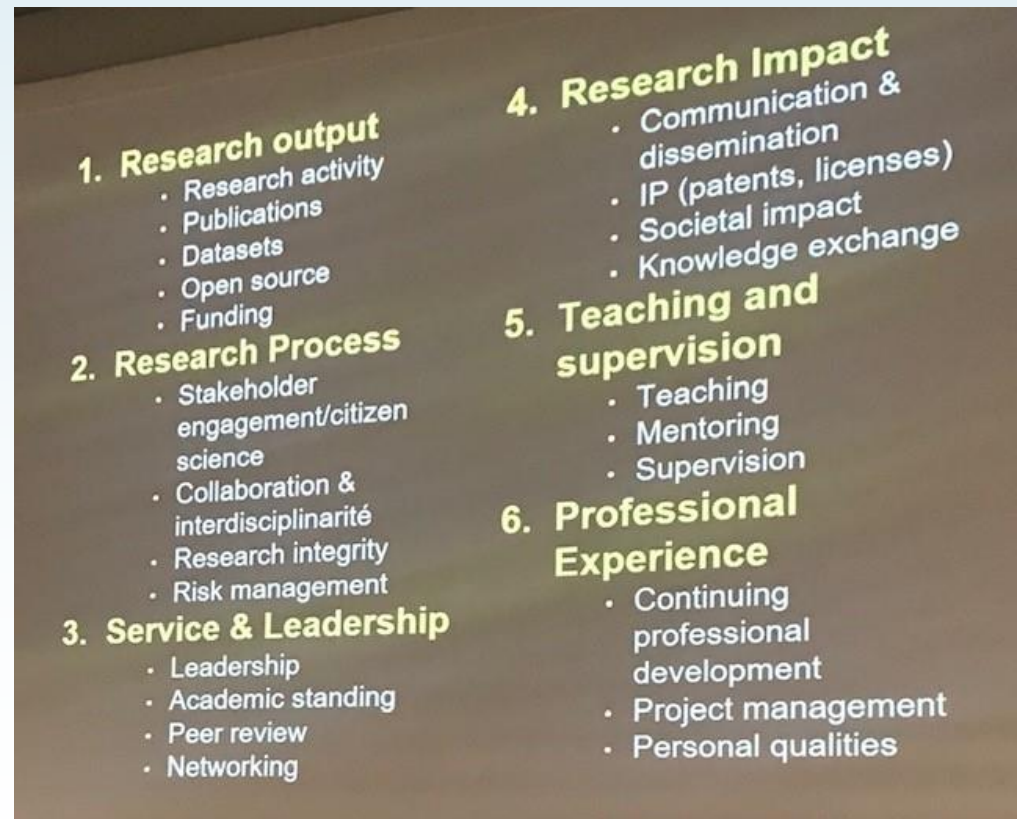
**Professor
Bernard
Rentier,
Rector
Emeritus,
University
of Liège**

OAI11,
Geneva,
19-21 June
2019



Evaluating research careers in an Open Science landscape

- ❑ European Commission report on evaluating research careers in the context of Open Science
 - ❑ https://ec.europa.eu/research/openscience/pdf/os_rewards_wgreport_final.pdf
- ❑ 23 criteria identified for a rounded evaluation
- ❑ Matrix **not** metrics



San Francisco Declaration on Research Assessment; Leiden Manifesto

- ❑ Don't use Numerical Values like Journal Impact Factors as a surrogate for academic quality
- ❑ Too many academic papers to read for appointments? Ask for best 5 to be submitted & read them
- ❑ Use bibliometrics only as an *adjunct* to qualitative assessment
- ❑ Base assessment of individual researchers on a qualitative judgement of their portfolio



Display at Blickling Hall, Norfolk

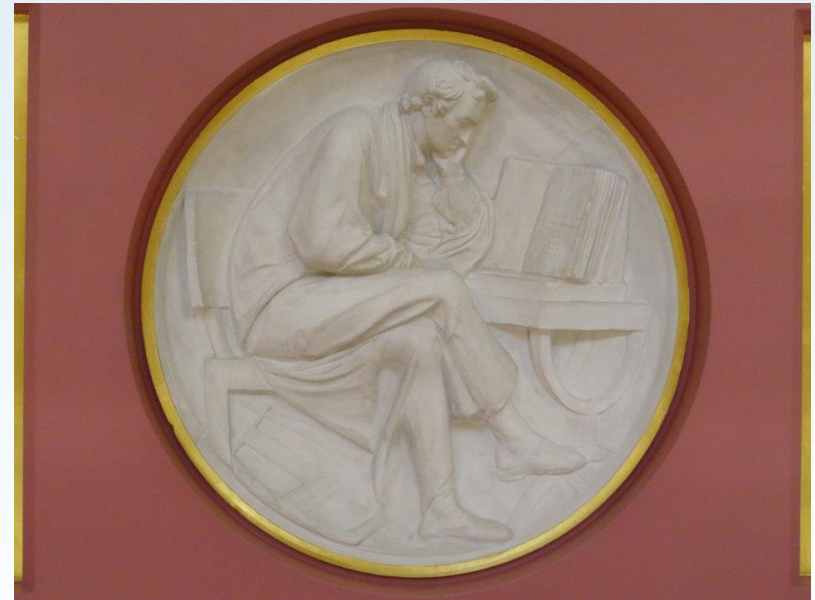
Rewards

- ❑ Insert Open Science principles into career frameworks
- ❑ Develop institutional policies for rewarding Open Science
- ❑ Apply to appointment, promotion and appraisal procedures
 - ❑ UCL has included openness into its new academic promotions framework
 - ❑ <https://www.ucl.ac.uk/human-resources/sites/human-resources/files/ucl-130418.pdf>



Content

- LERU Roadmap
- Future publishing models
 - UCL Press 'white label' publishing service
- Research Data
- Rewards and Evaluation
- LERU Leadership Statement
- Building the Open Science community
- Conclusion



Plaster Relief by John Flaxman,
Flaxman Gallery, UCL

LERU Leadership Statement

❑ LERU wants to underline the importance of the culture shift which is needed for the implementation of Open Science in universities, in particular with regard to Open Access publications. Plan S poses significant challenges for universities, not least in terms of managing costs

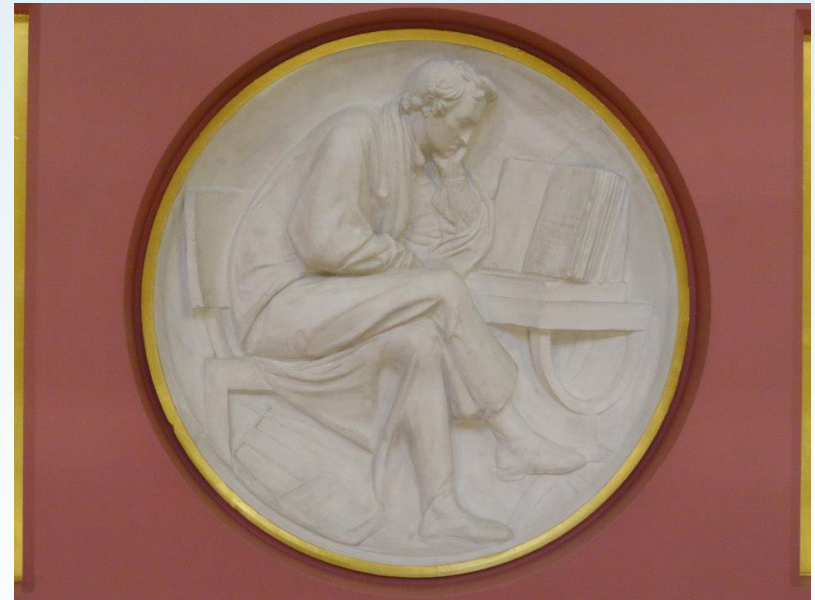
❑ Without a successful conclusion to the debate, a successful transition to Open Science will not be possible

<https://www.leru.org/news/leadership-the-key-to-open-science-success>



Content

- LERU Roadmap
- Future publishing models
 - UCL Press 'white label' publishing service
- Research Data
- Rewards and Evaluation
- LERU Leadership Statement
- Building the Open Science community
- Conclusion



Plaster Relief by John Flaxman,
Flaxman Gallery, UCL

Building the community

- ❑ OAI meetings in Geneva every 2 years
- ❑ <https://indico.cern.ch/event/786048/>



Focus on Open Science

- ❑ <https://www.focusopenscience.org/>
- ❑ Workshops delivered at your door

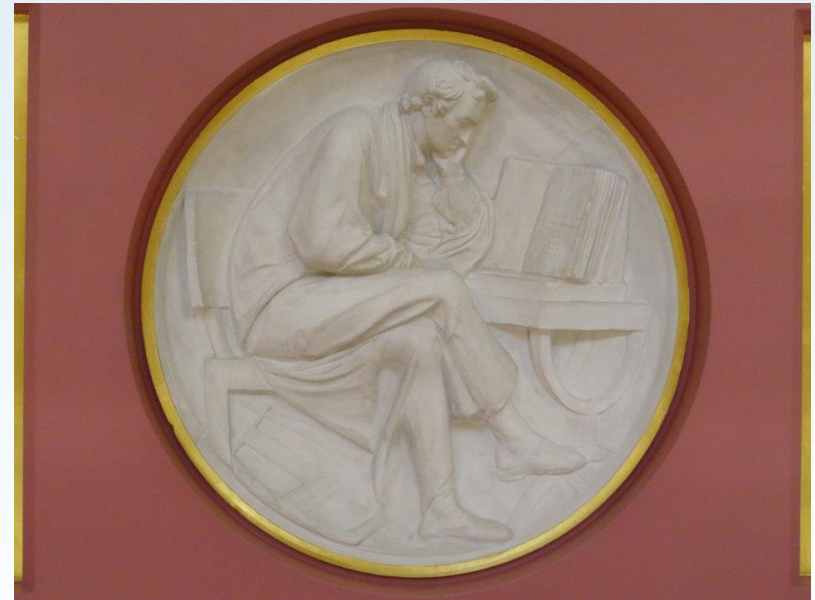


OPEN SCIENCE

- ❑ Open Science Crowd Helix – for partnerships and project bids
- ❑ E-mail openscience@crowdhelix.com to join

Content

- ❑ LERU Roadmap
- ❑ Future publishing models
 - ❑ UCL Press 'white label' publishing service
- ❑ Research Data
- ❑ Rewards and Evaluation
- ❑ LERU Leadership Statement
- ❑ Building the Open Science community
- ❑ Conclusion



Plaster Relief by John Flaxman,
Flaxman Gallery, UCL

Conclusion

- Open Science is good for the researcher
- Open Science is an opportunity, not a threat
- Whether Plan S will work remains to be seen



UCL Student Centre, opened 18/2/19